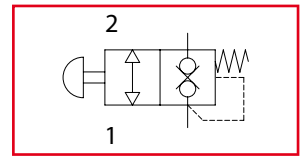




# VEM

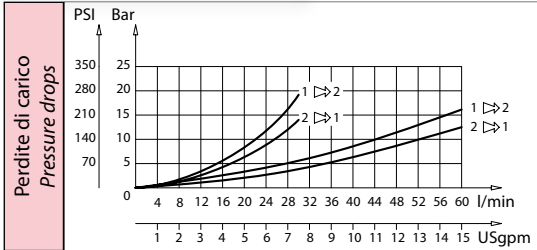
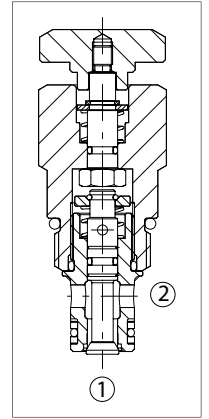
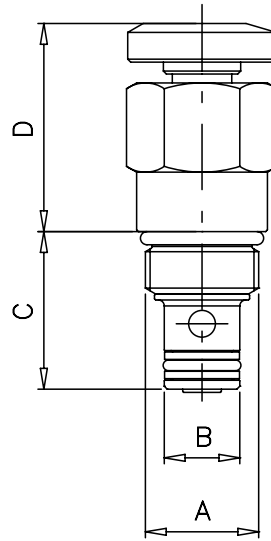
Valvole di emergenza manuale  
Manual emergency valves



**LEHENGÖK, S. A.**



Dati tecnici Technical data	
Viscosità fluido Fluid viscosity	10-500 mm <sup>2</sup> /s 45 to 2000 ssu (6 to 420 cSt)
Classe di contaminazione Filtration	ISO code 16/13 SAE class 4 or better
Temperatura fluido Fluid temperature	-20°C +80°C -4°F + 176°F
Temperatura ambiente Ambient temperature	-20°C +50°C -4°F +122°F



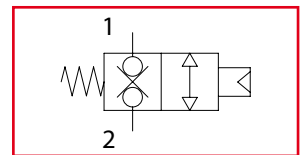
Caratteristiche tecniche Technical performances									
Codice Code	A	Portata Max Max flow l/min - USgpm	Pressione Max Max pressure bar/PSI	B	C	D	Peso approssimativo Approx weight Kg / lb	Coppia di serraggio Tightening torque Nm / lbf ft	Cavità Cavity
VEM6	3/4 - 16UNF	30 (8)	320 (4500)	12,7 (0.5)	26,5 (1.04)	35 (1.38)	0,12 (0.27)	25-30 (19-22)	SAE8/2
VEM10	7/8 - 14UNF	50 (13)		15,87 (0.62)	32,5 (1.28)	43,5 (1.71)	0,20 (0.44)	41-47 (30-35)	SAE10/2

Codice ordinazione Ordering code	
<b>VEM - X</b>	
<b>X</b>	Dimensione / Size
<b>6</b>	<b>3/4 - 16UNF</b>
<b>10</b>	<b>7/8 - 14UNF</b>



# VPN6

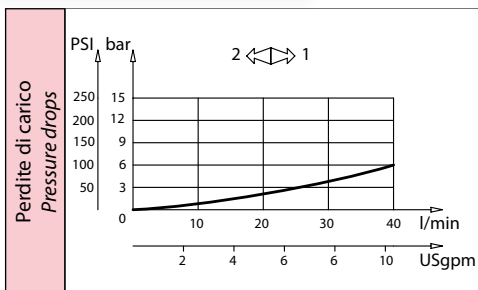
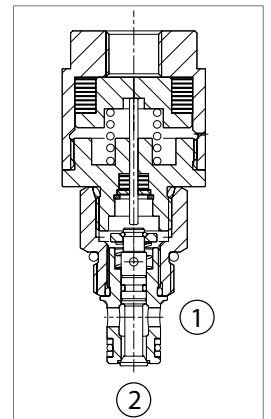
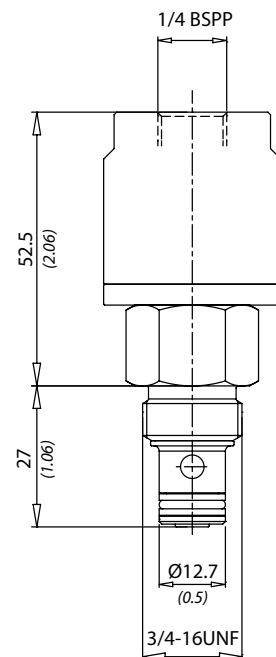
Valvole pneumatiche  
Pneumatic valves



**LEHENGÖK, S. A.**



Dati tecnici Technical data	
Viscosità fluido Fluid viscosity	10-500 mm <sup>2</sup> /s 45 to 2000 ssu (6 to 420 cSt)
Classe di contaminazione Filtration	ISO code 16/13 SAE class 4 or better
Temperatura fluido Fluid temperature	-20°C +80°C -4°F + 176°F
Temperatura ambiente Ambient temperature	-20°C +50°C -4°F +122°F



Caratteristiche tecniche Technical performances						
Codice Code	Portata Max Max flow l/min - USgpm	Pressione Max Max pressure bar/PSI	Peso approssimativo Approx weight Kg / lb	Coppia di serraggio Tightening torque Nm / lbf ft	Cavità Cavity	Pressione di pilotaggio Pilot pressure bar / PSI
VPN6	40 (10)	350 (5000)	0,16 (0.35)	25-30 (19-22)	SAE8/2 (2)	4/15 (58/218)

Codice ordinazione Ordering code
<b>VPN6</b>